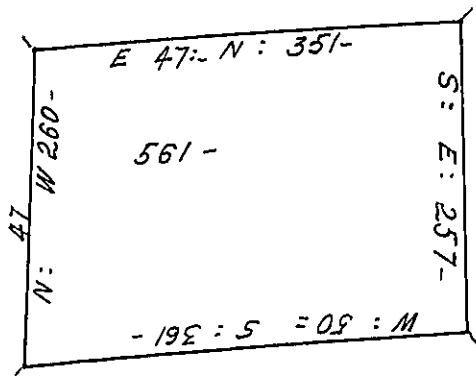


Jo<sup>m</sup> Humphry

574-



Pursuant to a Warr<sup>t</sup> from y<sup>e</sup> Commis<sup>rs</sup> of Prop<sup>ty</sup> directed unto Me bearing Date y<sup>e</sup>  
 29 day of y<sup>e</sup> 7<sup>th</sup> m<sup>o</sup> Last: I do hereby Certify y<sup>t</sup> I have Re-surveyd unto John Humphrys  
 a Certain tract of Land in y<sup>e</sup> County of Philadelphia in y<sup>e</sup> Township Gwynedd  
 begining at a stake set in y<sup>e</sup> ground in a Line of Joseph ffishers Land from  
 thenc by y<sup>e</sup> said Line of marked trees South East: 257 perches to a stake set in the  
 ground from thenc by a Line of marked trees deviding it from Robert Evans  
 Land ~~East~~: West 47 degrees South 361 perch to a stake set in y<sup>e</sup> ground thenc by a  
 Line of Marked trees deviding it from Edward ffoulke<sup>s</sup> Land North 47 degrees  
 West: 260 perches to a stake set in a Line of Owen ap Evans Land from thenc by a  
 Line of Marked trees & y<sup>e</sup> same Land East 47 degrees North 351 perches to y<sup>e</sup> place  
 of begining Containeing 561 acors of Land and is according to y<sup>e</sup> bounds above  
 described Returnd into y<sup>e</sup> Generall Surveyis Office at Philadelphia y<sup>e</sup> 21<sup>st</sup> day of  
 y<sup>e</sup> 10 m<sup>o</sup> 1702

P. David Powell

IN TESTIMONY that the above is a copy of the original remaining on file in  
 the Department of Internal Affairs of Pennsylvania, made conformably to an Act of Assembly approved the 16th day of  
 February, 1833, I have hereunto set my Hand and caused the Seal of said Department to be affixed at Harrisburg,  
 this First day of February 1910

Henry Howe  
 Secretary of Internal Affairs.